

# EX-25 TOP

Single lever cartridge 25 mm  
Upper sealing

08EX25L0001  
08EX25L0002  
08EX25L0003  
08EX25L0004



## Technical specifications

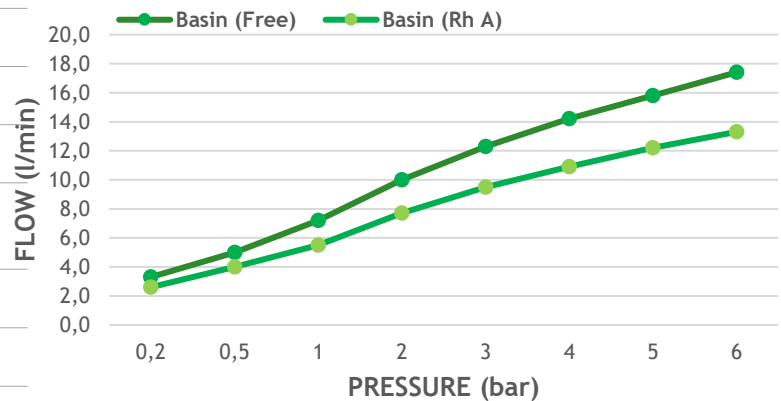
Prescribed tightening torque <sup>(1)</sup>	7-8 Nm
Opening angle	0 - 23° / 12,5° - 12,5°
Rotation angle	100°
Working pressure (recommended)	1 - 5 bar
Burst pressure	>50 bar
Life test EN 817 NF-077 U3 3xASME 112.18.1 M 3x GB18145	175,000 cycles 1.500.000 cycles 210.000 cycles
Sensitivity <sup>(2)</sup> (DN8)	>12°
Fidelity <sup>(2)</sup>	<5 °C
Constancy 63°C & 50°C (6 l/m - 3 l/m) <sup>(2)</sup>	<4°C - <6°C
Max. Hot water recommended	65 °C

### Flow rate basin faucet @ 3 bar <sup>(2)</sup>

Free flow (Mix)	12,30 l/min
Rh A flow (Mix)	9,5 l/min
Acoustic (NF077) RhA 3bar	Group I
<b>Operation torque (3 bar)</b>	
Open - Close	0,15 - 0,35 Nm
Left - Right	0,15 - 0,35 Nm

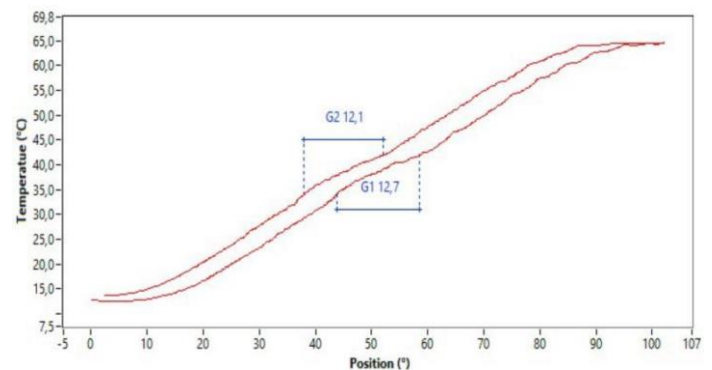
## Flow Rate<sup>(2)</sup> DN8

(Basin faucet at mix position)



## Sensitivity<sup>(2)</sup>

(G1, G2 values in mm, with handle r=45mm, basin faucet @ bar)



(1) The prescribed tightening torque is related to faucet body and nut both in brass material, pitch 1,5mm and no lubricant applied on the threads. For other faucet body – nut material combinations please contact SEDAL.

(2) Measured with SEDAL faucet.

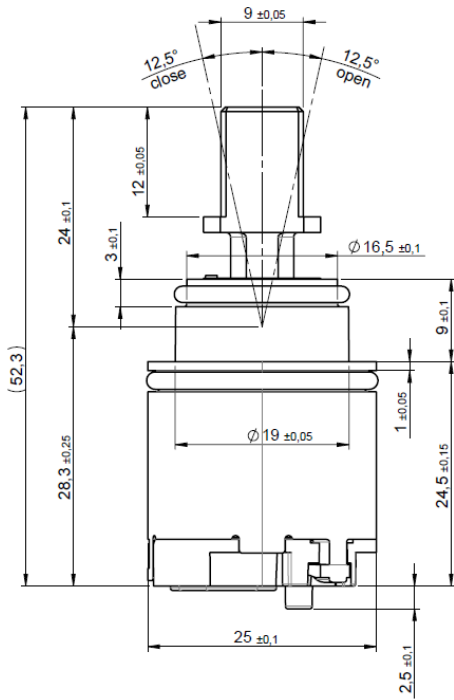
Single lever cartridge 25mm  
Upper sealing

EX-25 TOP

**Technical dimensions (3)**

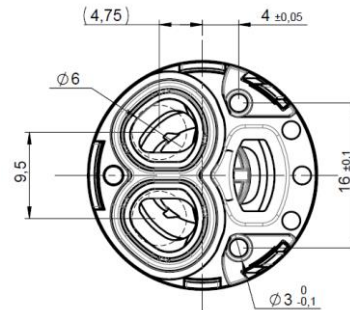
**08EX25L0001**

**08EX25L0004**



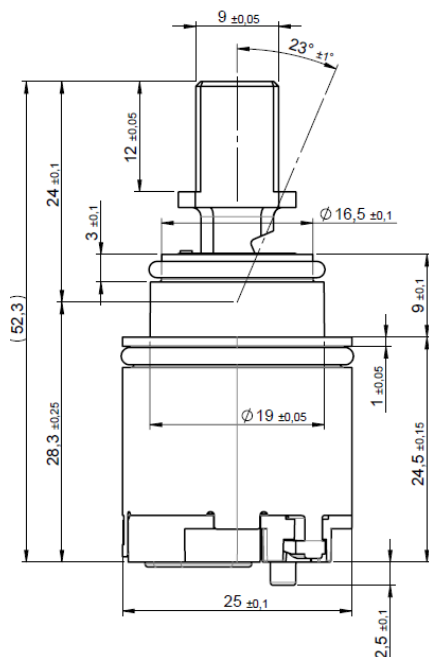
**08EX25L0001**

**08EX25L0002**



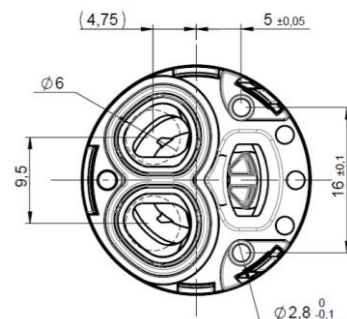
**08EX25L0002**

**08EX25L0003**



**08EX25L0003**

**08EX25L0004**

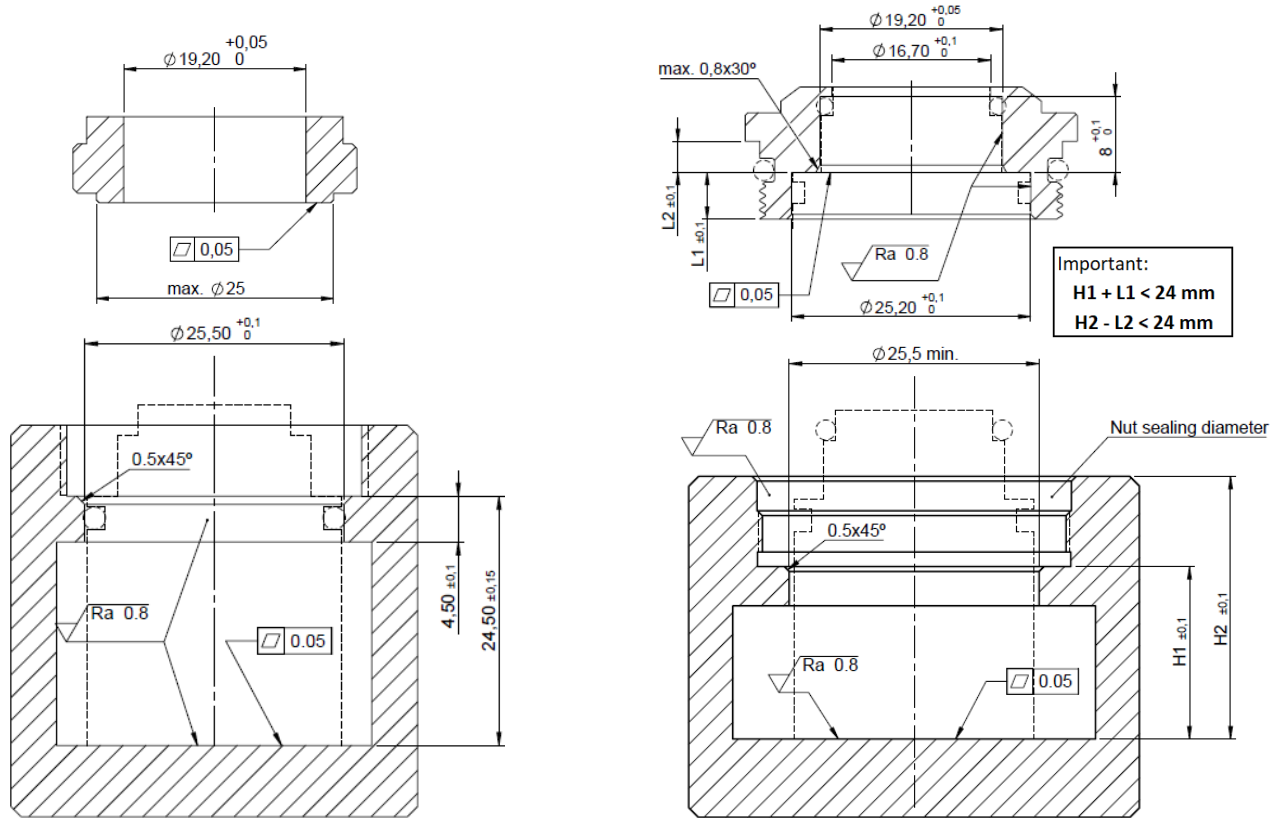


(3) Dimensions of the cartridge assembled into the faucet (without vertical gap between the cover and the base)

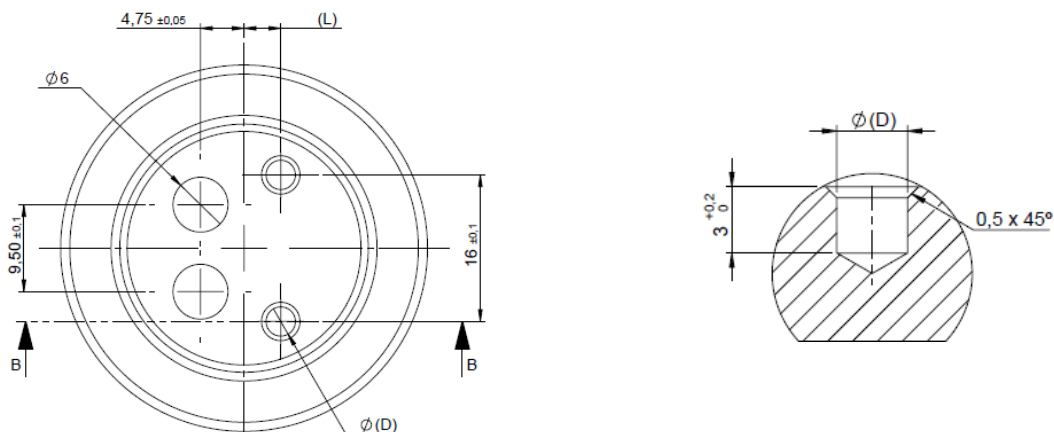
Single lever cartridge 25mm  
Upper sealing

EX-25 TOP

### Machining prescription (4)



	L	D
08EX25L0001	4±0,05	3,3±0,05
08EX25L0002	4±0,05	3,3±0,05
08EX25L0003	5±0,05	3,1±0,05
08EX25L0004	5±0,05	3,1±0,05



(4) Sealing surfaces must be free of burrs and sharp areas. The faucet body must be free of debris