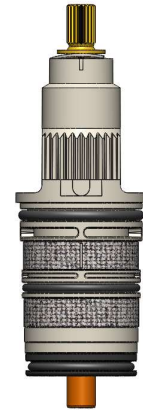


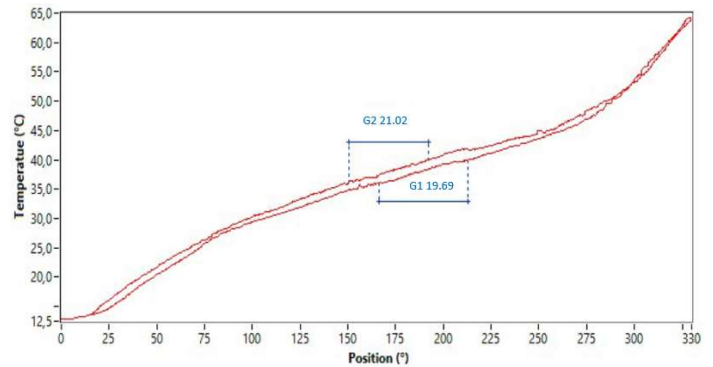
Thermostatic cartridge TM002 07TM0208



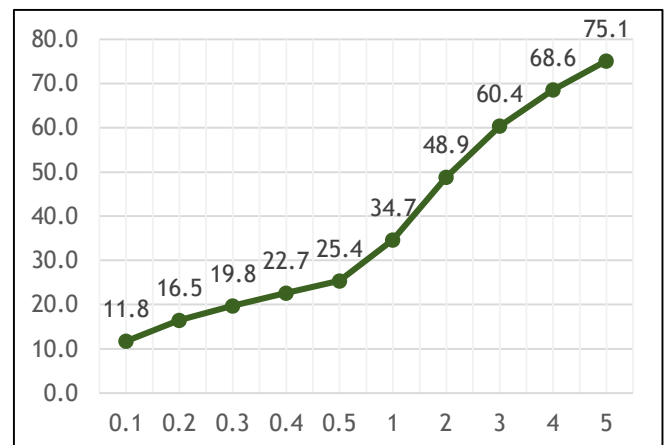
Technical specifications (*)

Standards	ASSE-1016
Burst pressure	>35 bar / 1 min
Life cycle	ASSE 1016 100,000 cycles
Max. Hot water temperature	90 °C
Max. Turn angle for stoppers (from 38°C in 0° angle position)	±170° angle
Noise level (EN1111)	Class I
Smooth feeling movement	
Turn left-right	Max 0,5 Nm
Sensitivity (36-40°C) (handle R 20mm)	19 mm
Water supply failure test	Perfect cutting
Flow rate (Free)	60.4 l/min at 3 bar

Sensitivity curve



Flow rate curve



(*) Checked with Sedal's faucet

Machining tips

